

VERTICAL INFORMATION SUPPLIED BY Z N & S.

INFORMATION FOR THIS DRAWING SUPPLIED BY JESCA CORP. THE UTILITY CONTRACTOR.

RECORD SEWER & WATER
 FOR
HARBOUR TOWN or LANDINGS
 IN
 SEC. 34/35, TWP 34S., RGE. 16E
 SEC 3, TWP. 35S., RGE. 16E.
 MANATEE COUNTY, FLORIDA

REVISIONS	
1	7-10-84
2	5/3/85 RECORD DRAWING
3	
4	
5	
6	
7	

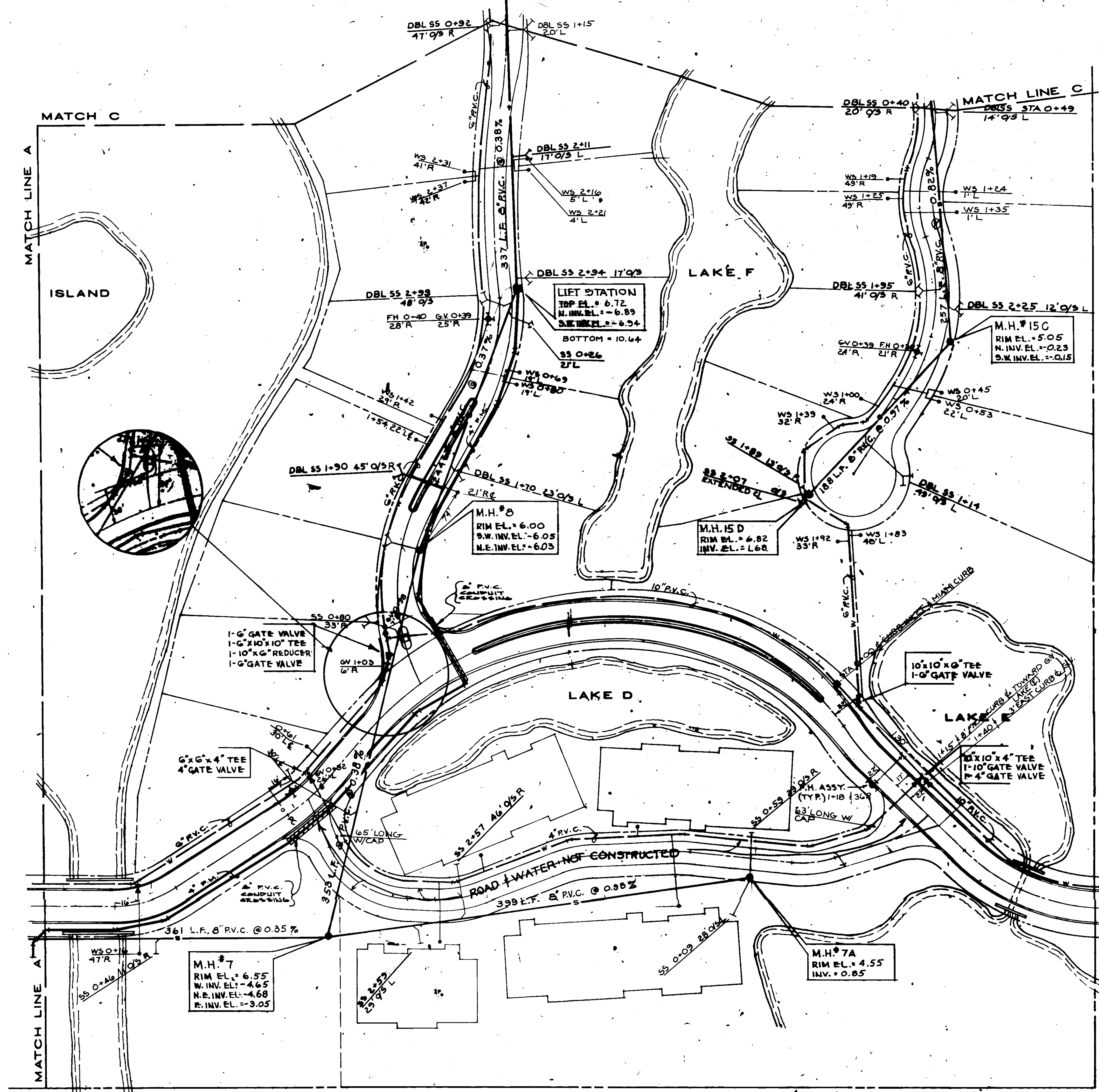
Zoller & Najjar Engineering, Inc.
 Engineers, Planners, and Land Surveyors

201 9th Avenue Drive East
 Post Office Box 9448
 Bradenton, Florida 33808
 Telephone (813) 748-8080

DESIGNED: J.A. CHECKED: DATE: JUNE, 1984 SCALE: NONE
 DRAWN: J.A.L. COMP: JOB NO: 318-5019 FILE NO: 0696 SHEET 14 OF 23

EXTEND 6\"/>

EXISTING M.H.
RIM EL = 3.20
INV EL = -2.95
FM INV EL = 2.00



INFORMATION FOR THIS DRAWING SUPPLIED BY
JESCA CORP. THE UTILITY CONTRACTOR.

VERTICAL INFORMATION SUPPLIED BY Z.N.&S.

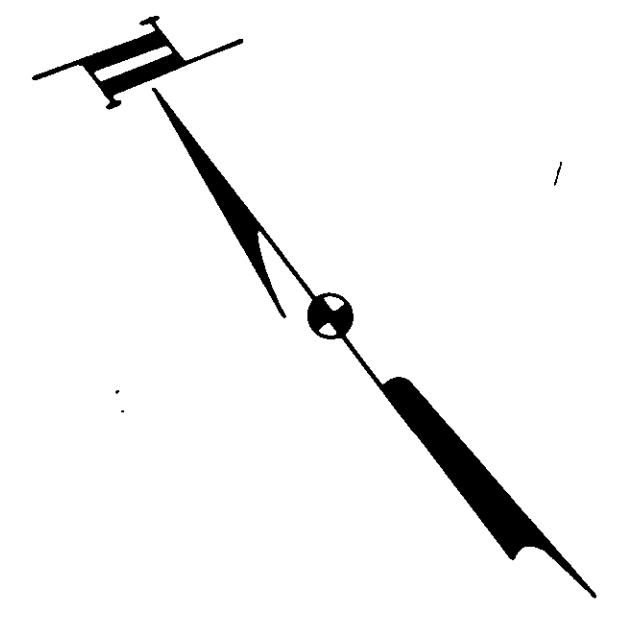
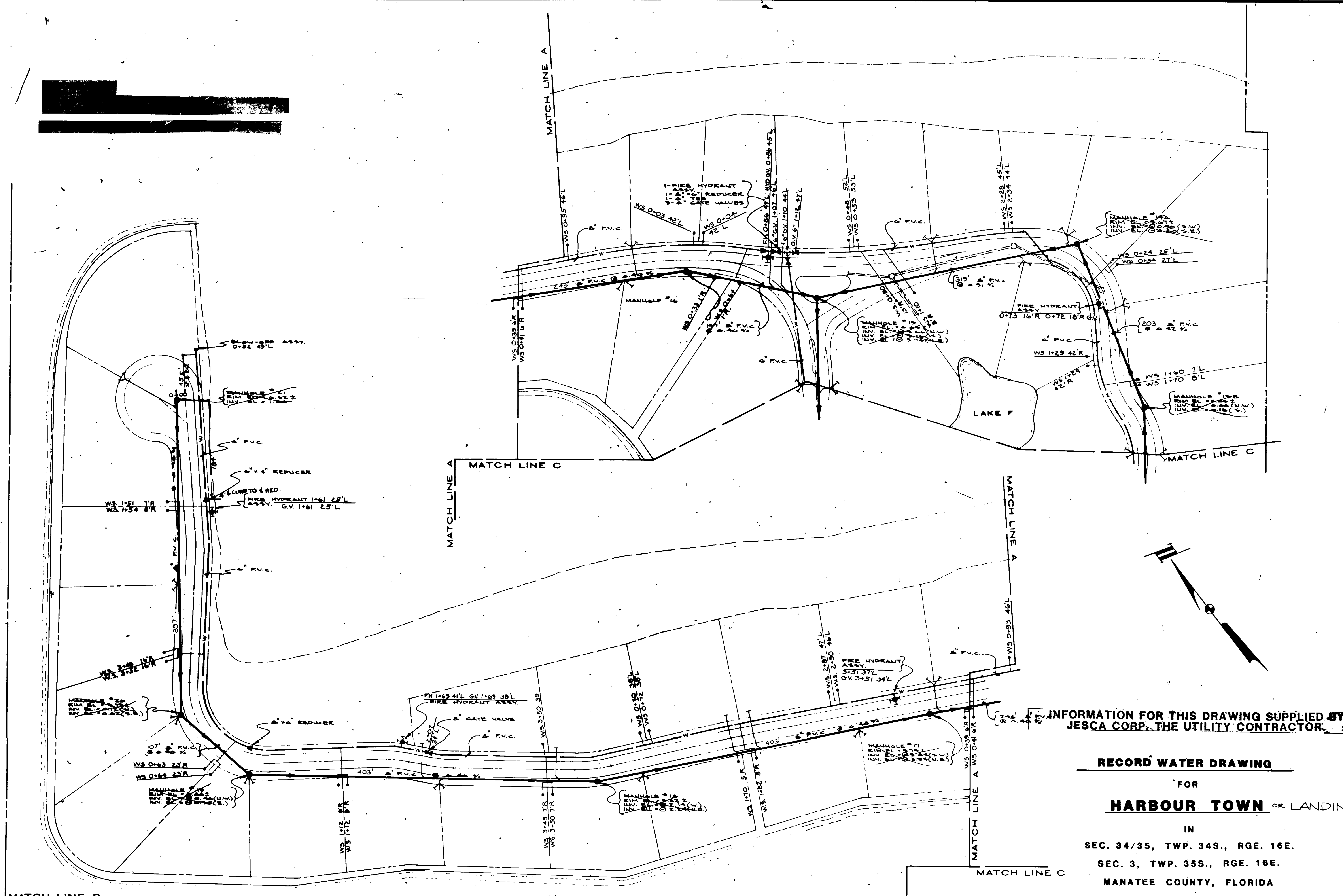
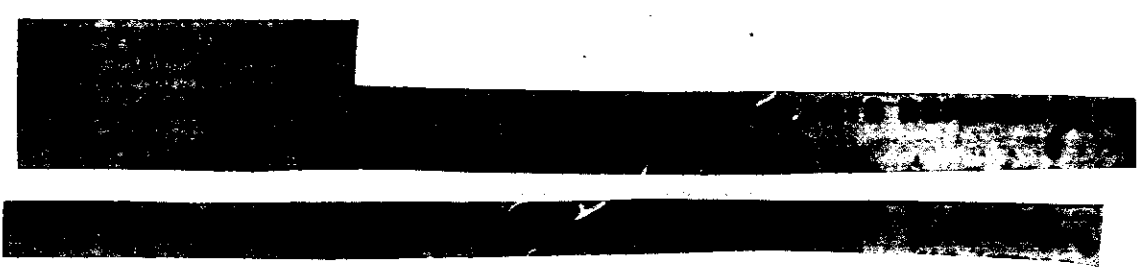
RECORD SEWER & WATER
FOR
HARBOUR TOWN OR LANDINGS
IN
SEC. 34/35, TWP. 34S., RGE. 16E.
SEC. 3, TWP. 35S., RGE. 16E.
MANATEE COUNTY, FLORIDA

REVISIONS	
1	7-10-84
2	
3	
4	
5	
6	
7	

Zoller & Najjar Engineering, Inc.
Engineers, Planners, and Land Surveyors

DESIGNED: J.A. CHECKED: DATE: JUNE, 1984 SCALE: NONE
DRAWN: L.A.L. COMP: JOB NO. 318-5019 FILE NO. 0696 SHEET 15 OF 23

BRADENTON, FLORIDA 33508
TELEPHONE (813) 748-0300



INFORMATION FOR THIS DRAWING SUPPLIED BY
JESCA CORP. THE UTILITY CONTRACTOR.

RECORD WATER DRAWING
 FOR
HARBOUR TOWN OR LANDINGS
 IN
 SEC. 34/35, TWP. 34S., RGE. 16E.
 SEC. 3, TWP. 35S., RGE. 16E.
 MANATEE COUNTY, FLORIDA

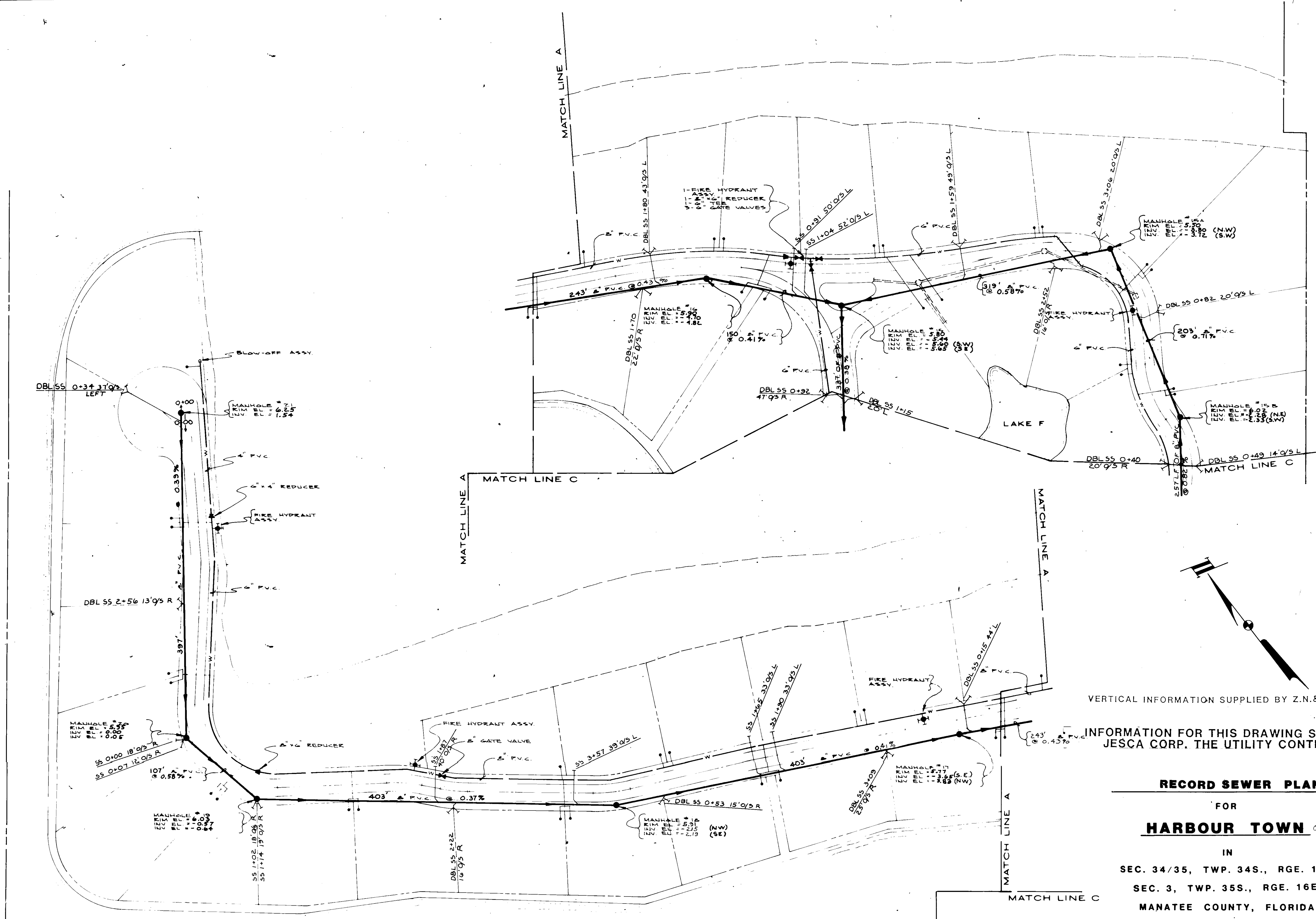
MATCH LINE B

REVISIONS	
1	7-10-84
2	
3	
4	
5	
6	
7	

Zoller & Najjar Engineering, Inc.
 Engineers, Planners, and Land Surveyors

201 SW MEANE DRIVE EAST
 POST OFFICE BOX 8448
 BRADENTON, FLORIDA 33908
 TELEPHONE (813) 748-8080

DESIGNED: _____ CHECKED: _____ DATE: JULY 1984 SCALE: NONE
 DRAWN: _____ COMP: _____ JOB NO: 318-5019 FILE NO: 0690 SHEET 16 OF 22



VERTICAL INFORMATION SUPPLIED BY Z.N.&S..

INFORMATION FOR THIS DRAWING SUPPLIED BY JESCA CORP. THE UTILITY CONTRACTOR.

RECORD SEWER PLAN
 FOR
HARBOUR TOWN OR LANDINGS

IN
 SEC. 34/35, TWP. 34S., RGE. 16E.
 SEC. 3, TWP. 35S., RGE. 16E.
 MANATEE COUNTY, FLORIDA

MATCH LINE B

REVISIONS	
1	7-10-84
2	
3	
4	
5	
6	
7	

Zoller & Najjar Engineering, Inc.
 Engineers, Planners, and Land Surveyors

201 5th AVENUE DRIVE EAST
 POST OFFICE BOX 8448
 BRADENTON, FLORIDA 33506
 TELEPHONE (813) 748-8080

DESIGNED _____ CHECKED _____ DATE JULY, 1984 SCALE NONE
 DRAWN _____ COMP _____ JOB NO. 318-5019 FILE NO. 0690 SHEET 16 OF 23